

Rotax Intermediate From engine number 8626234

A specific Exhaust system has to be used for the 125 Rotax Intermediate engine.

ROTAX Part number 273137

The Exhaust external body is a common component to Rotax Micro Cadet but with alternative internal components (Inserts).

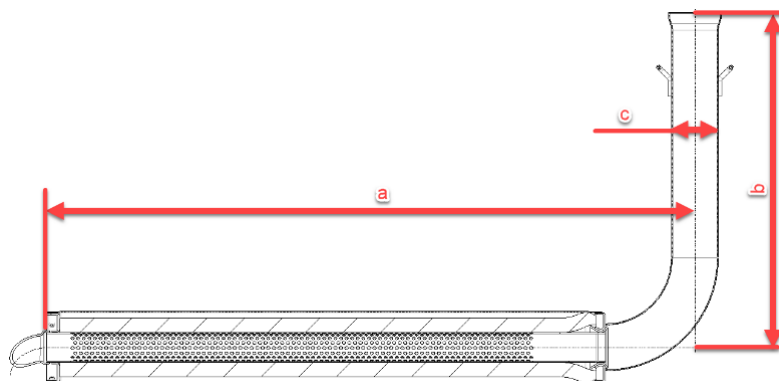
The silencer must be mounted in a position where the direction of the 90° elbow outlet (direction of the hot exhaust gasses) does not harm any component of the chassis.

The measurements in the diagram below are as follows:

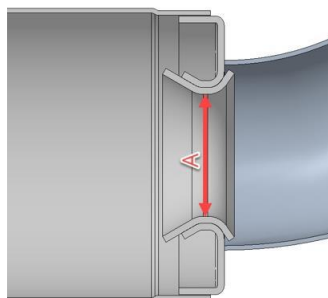
(a) 580 mm +/- 5mm

(b) 299 mm +/- 5mm

(c) 42 mm +/- 3mm



A steel ball with a 28.0mm diameter **must not** pass through Section "A" and a steel ball with a 26.0mm diameter must be able pass through Section "A" in the below diagram from the inlet and through the 90-degree elbow completely. (Internal exhaust components must first be removed)



The inner measurement of the exhaust system silencer end (a) in the below diagram must be a maximum of 63.0 mm.

The Exhaust must be installed firmly to the chassis using a rigid mount/s.

The Exhaust must be mounted to the rigid mount/s using 2 ROTAX silent blocks. (part 660920 and or 260657 allowed).

The deflection of the 2 silent blocks is the only Exhaust movement allowed.

The Exhaust must be mounted in a neutral position with no stress on the 2 silent blocks.

Rotax Intermediate Perforated tube

ROTAX part number: 273211

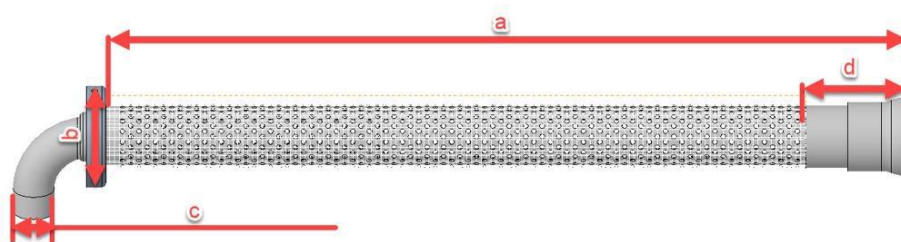
The measurements in the diagram below are as follows:

(a) ~~at least 484 mm~~ note: measurement removed until further notice

(b) minimum outside diameter of 61mm

(c) maximum outside diameter of 26mm

(d) minimum length 63mm



Note:

Rotax Intermediate perforated tube has a stamped ID marker " X " visible externally.



The only legal Isolation matting for 125 Rotax Intermediate is:

ROTAX part number 297985

New size minimum 490 x 180mm (+/-10mm)

New weight 141gr (119g – 163g)

Used weight minimum 110g

Used weight maximum 350g

NOTE:

The only exhaust system allowed for racing in the Rotax Intermediate and 125 Micro UK and category's is the MY2020 version.

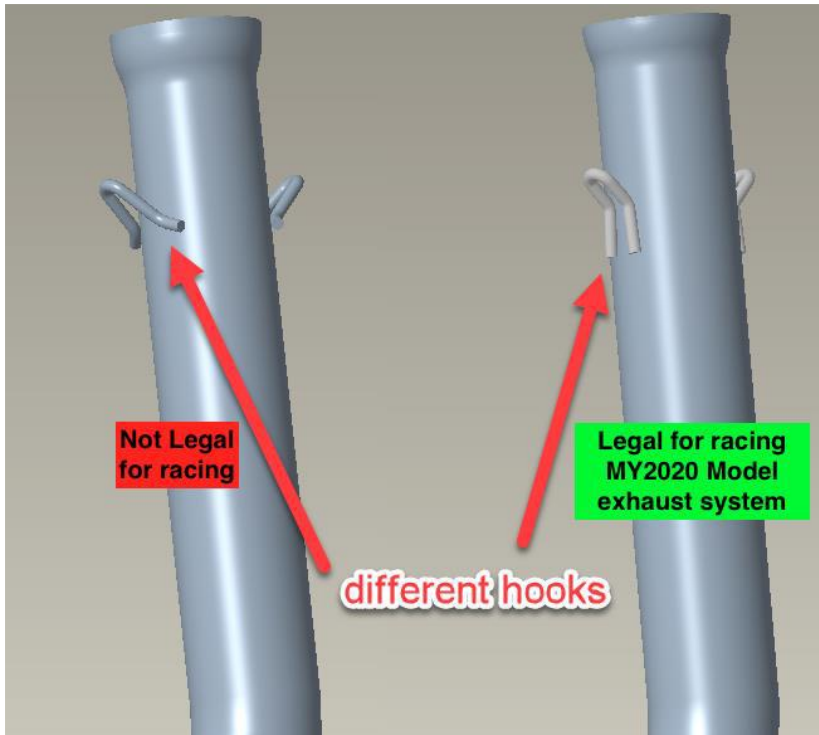
The exhaust has 3 clear visual differences to identify the MY2020 version.

1. Exhaust hooks
2. Connecting socket / ball joint connect at manifold
3. Wall thickness of the exhaust system is 1.0mm (older exhaust system which is not allowed for racing has a wall thickness of 1.5mm)



Not Legal for racing

Legal for racing
MY2020 Exhaust system

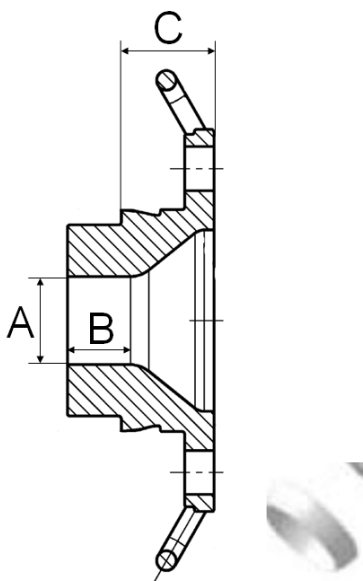


Rotax Intermediate Exhaust Socket Restrictor

Just exhaust sockets with gasket ring are legal to be used. Diameter (A) must apply for a length (B) of at least 12 mm. Maximum inner diameter (A) of exhaust sockets are: **22.2mm (Rotax part no 273196)**

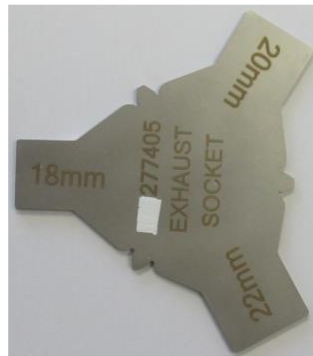
The measurement (C) must be at least 18,5 mm.

Just exhaust sockets with gasket ring 450360 are legal to be used



The internal profile of the exhaust socket has to be checked with the template, Rotax 277 405.

Fit the template (**125 Rotax Intermediate** “22 mm”,) as far as possible into the exhaust socket (without gasket, carbon deposits removed). There has to be a constant crack light between the profile of the exhaust socket and the profile of the template.



Inlet throttle restrictor must be in place at all times. Restrictor must be as supplied by J.A.G. and comply with the official fiche, no modifications allowed. The length of the inlet throttle restrictor must be 38mm minimum. Part number 251730, this restrictor must be used with a 5mm washer and the fixation plate Part number 251790.

125 Rotax Intermediate

The throttle body restrictor must be installed in the rear of the carburettor and in the correct orientation at all times.

ROTAX part number: 267536

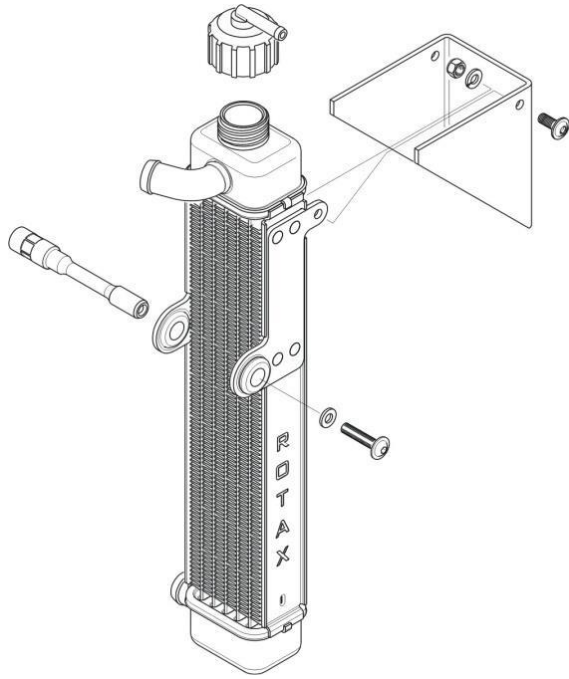
No modifications are allowed, the ribbed surface on the inlet is to help ensure dimensions have not been modified.

Radiator Part no; 295923

The removal of the thermostat from the cylinder head cover is an allowed modification. Radiator must be mounted with all components as shown in the respective illustration. To apply tape around the radiator is an allowed modification to control the air flow through the radiator. Tape may not be removed from the radiator during operation on the track. Any other non-original device to control the air flow through the radiator is prohibited.

125 Micro MAX Cadet UK and Rotax Intermediate

Cooling area: Height: 280 – 300 mm Width: 58 – 62 mm Thickness of radiator: 30 – 34 mm
To remove the original flap is an allowed modification.



Gearing: FREE

Jet Range: FREE

Squish Measurement: 1.2

ECU: 666818

ALL PARTS INTERNALLY AND EXTERNALLY MUST BE CURRENT ROTAX EVO

Fuel filter part number 274161 is mandatory